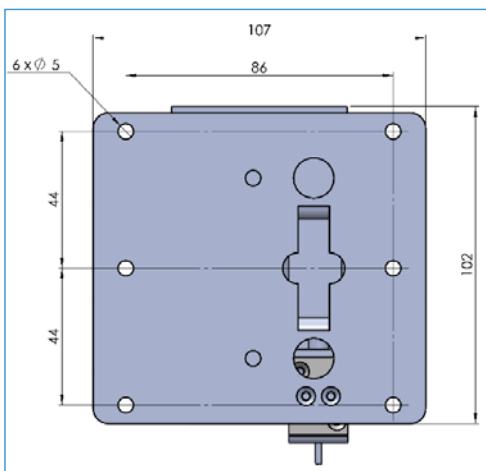
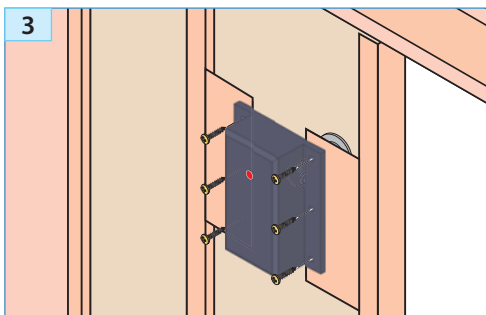
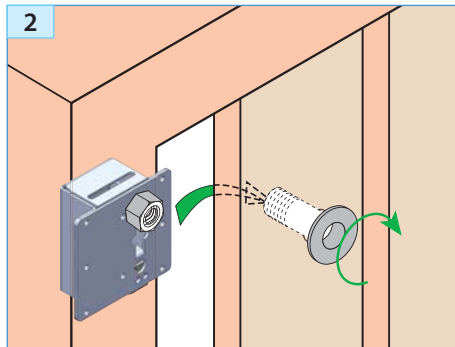
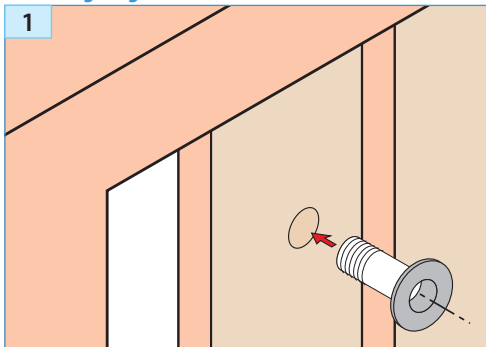


# Setting up the unit

DAVOT/750

## Mounting stages



**WIRING:**  
 - DAVOT/750 (24 V dc - 100 mA) :  
 Blocking only,  
 device blocked when switched off.  
 - 2 wires : feeding 24 V dc

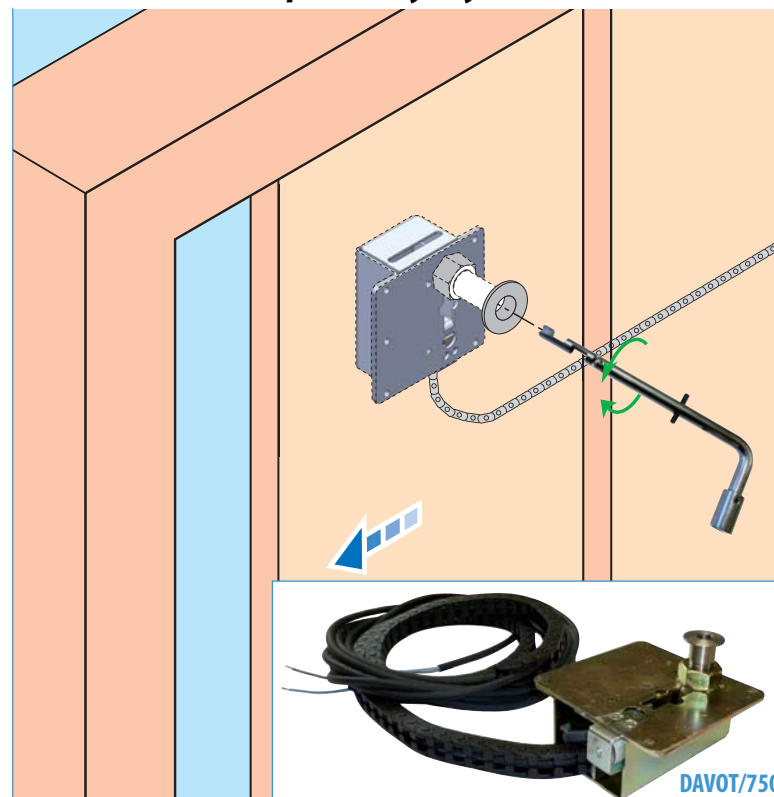
**Option : Unlocking-rod for «Express key» device (ref. TDV/DAVOT).**

Ind. A du 12/12/2013

NI

Document non contractuel, sous réserve de modification - Reproduction interdite.

## Electromechanical anti vandal unlocking For automatic sliding doors equipped with «Express Key» system.



**Supplies :**  
 Set DAVOT + screws

**Optional :**  
 TDV/DAVOT

PLEASE, BEFORE INSTALLATION, READ IT CAREFULLY.

**prudhomme S.a**

38, Rue Charles de Gaulle F  
 94140 Paris/Alfortville  
 www.prudhomme.com  
 Tél. : +33 01 45 18 19 20  
 Fax : +33 01 45 18 19 21

**prudhomme S.a**

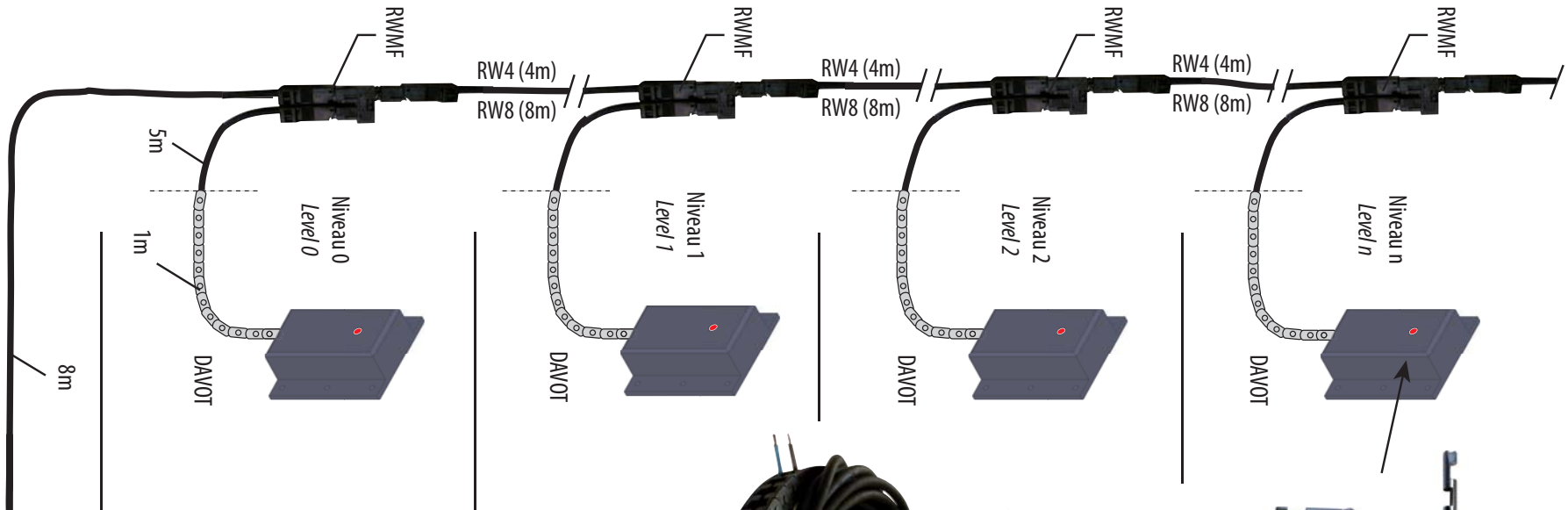
Matériel spécifique pour ascenseurs - specific parts and components for elevators

36 070 PRODUCT INSTALLATION  
 CARD-INDEX

For automatic landing doors

# Electromechanical anti vandal unlocking

For automatic sliding doors equipped with «Express Key» system.



**Raccordement :**

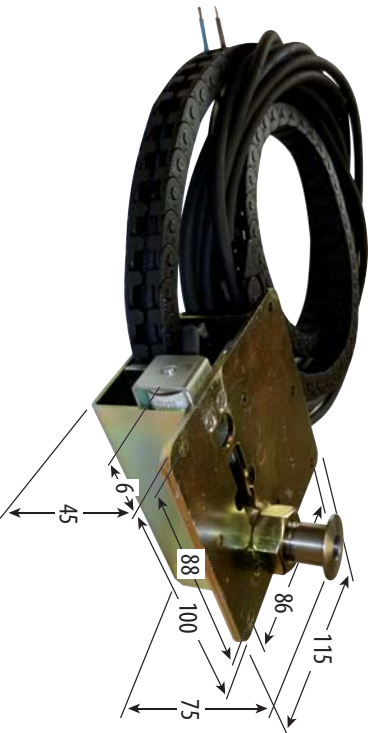
- DAVOT/750 (24 V dc - 100 mA) : Blocage uniquement, module bloqué hors tension.
- 2 conducteurs : alimentation 24V dc.

**Wiring :**

- DAVOT/750 (24 V dc - 100 mA) : Blocking only, device blocked when switched off.
- 2 wires : feeding 24V dc.

**ANSCHLUSS :**

- DAVOT/750 (24 V dc - 100 mA) : Nur Blockierung, Blockiert wenn keine Stromzufuhr.
- 2 Leiter : Stromzufuhr 24V dc.



**MACHINERIE / MACHINERY / MASCHINENRAUM**

- CPP : COUP DE POING POMPIERS**  
(Obligatoire avec DAV)
- CPP : FIREMAN BUTTON**  
(obligatory with DAV)
- CPP : RETTUNGSMÄNNER-KNOPF**  
(obligatorisch mit DAV)



**AMC150**

**COFFRET D'ALIMENTATION SECOURUE  
EMERGENCY FEEDING BOX  
RETTUNGSTROM- VERSORGE STEUERUNG**



Alimentation 220 V ca  
supply 220 V ca

Dav-OT\_a.ai - 11/12/2013